

Spanish Courses

Barcelona

ESADE
B-School
4 in the World

ESADE Experience
The best language school of Barcelona



¡Bienvenidos!



ESADE

“Learning a language is like starting out on an incredible journey in two different directions simultaneously. In one direction, we discover the values and customs of the people who speak that language, and their different ways of interpreting the world. Our journey in the other direction is no less captivating. Here we embark on a voyage of reflection on our learning processes, our beliefs as students, our learning strategies and our abilities. This exciting adventure requires the very best guides and, in this respect, we undoubtedly have the very best. Join us and we’ll re-discover the world together.”

María Delia Castro Carrillo
Director of the Spanish Department
ESADE-Executive Language Center



Spanish is one of the languages of the future. After English, it is the second most-studied language in the world. This may be why you are thinking of learning the language yourself.

Perhaps you want to do business in Spain or Latin America, or just spend some time abroad. But whatever your motivation, I am sure you will find a course at ESADE-ELC that will meet your language needs. Our highly experienced native teachers provide effective language and cross-cultural training in an enjoyable learning environment, where you will work with other highly motivated participants from all over the world.

The large number of successful students who have learnt Spanish with us is proof that our methods work. Why not join them?

Welcome to ESADE.

Cornelia Hübner
Executive Director
ESADE-Executive Language Center



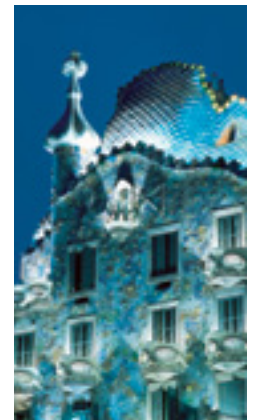
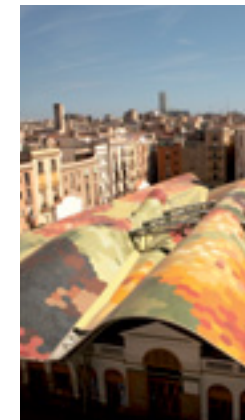
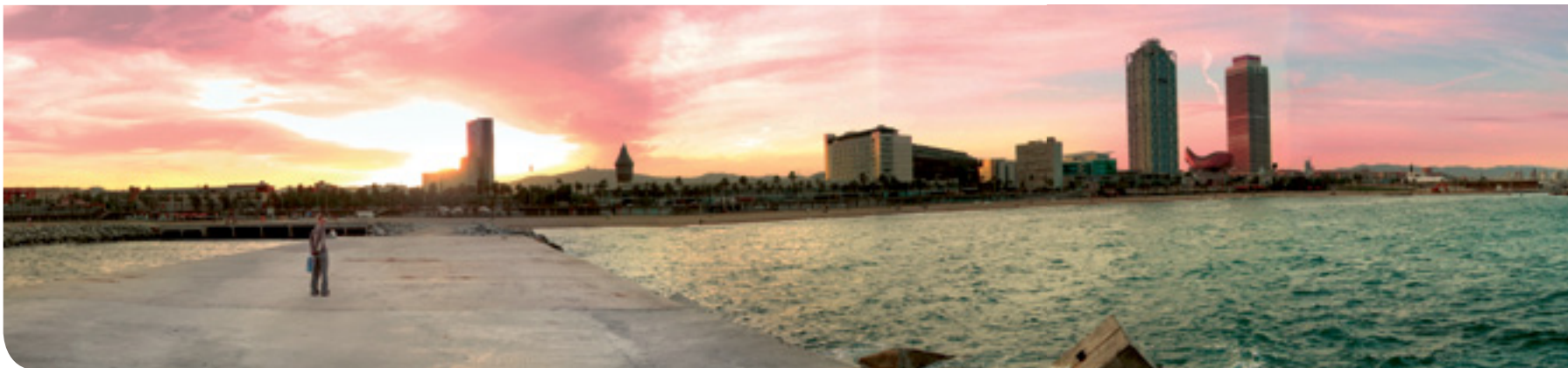


Barcelona

A great culture to discover

Barcelona is a city with a welcoming, Mediterranean spirit and an artistic, cultural and historical heritage that enthral visitors from all over the world. Situated on the Mediterranean coast, the city enjoys mild temperatures the whole year round.

Barcelona offers a wide variety of cultural activities. It has numerous art galleries, concert halls, theatres and cinemas, and organises major cultural events throughout the year. Barcelona's geographic location makes it an especially attractive city for sports fans: Ski resorts in the Pyrenees are just two hours' drive away and the city has a magnificent marina for water sports fans. The 1992 Olympic Games enhanced the range and quality of the city's sports facilities, offering something for everyone. If you want to read more about Barcelona, go to www.bcn.es



Barcelona offers a wide variety of cultural activities. It has numerous art galleries, concert halls, theatres and cinemas, and organises major cultural events throughout the year.



ESADE

Executive Language Center

Founded in 1958 as a private Business School, ESADE now has campuses in Barcelona, Madrid, Buenos Aires, São Paulo and Munich as well as collaboration agreements with over 200 universities and business schools worldwide. Each year, more than 12.000 students participate in its programmes (MBA and Executive Education, as well as undergraduate and master's programmes in law and business administration). Its business park, ESADECREAPOLIS, is a pioneering innovation centre where the academic and business worlds come together.

The ESADE-ELC has been giving language support since 1965; not only to ESADE and its students, but also to companies in their process of internationalization and to many individuals preparing themselves for the challenges of globalization.



The ESADE-ELC methodology is a stimulating, innovative and effective way to develop language tools and skills in order to communicate in foreign languages across borders and cultures

Spanish Department

Originally created as a small section within the ELC, the Spanish Department has grown over time to offer an ever increasing range of programmes. It has become a benchmark for teaching Spanish as a foreign language.

The ESADE-Executive Language Center is located in Building 3 on the ESADE-Pedralbes Campus. These first class facilities offer air-conditioned classrooms equipped with the latest technology, interactive learning areas, Internet access, computer room, Learning Centre, travel agency, cafeteria and restaurant. In addition, it offers a number of terraces with breathtaking views over Barcelona.

Five key steps of the ESADE-ELC method

At ESADE Executive Language Center, we are aware that learning a language involves time, effort and money. As a result, we make every effort to ensure that all our students achieve their goals. This can be seen in the '5 key steps of the ESADE-ELC method'.

1 Placement test and interview

The first step of our method involves a placement test, and in some cases a personal interview, to identify students' goals and language needs, and to identify their current level. This step is crucial and, to a large extent, students' satisfaction levels depend on getting this right.

2 Interesting courses

As the result of over 45 years' experience in language teaching, we offer a wide variety of courses so that you can choose the one that best fits your objectives, schedule, and personal and professional life.

3 Balanced groups

Amongst other things, experience has taught us that it is essential for groups to be balanced if students are to achieve their objectives. This may include interests, age groups, lifestyles and language levels.

4 The best teachers

Having the best language teachers ensures that you will have the best travelling companions on your learning adventure. At ESADE-ELC we have proficient and highly qualified professionals with extensive experience in teaching, developing educational materials and teacher training.

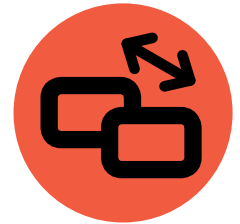
5 Facilities and resources

In addition to the learning environment itself, technical and teaching resources are a very important part of the learning process. The ESADE-ELC building has been custom designed with language classes in mind and is equipped to make language learning fun, effective and rewarding.

Advantages



Access to the Learning Center and to the Language School's lending service for books, DVDs, etc., during the course.



Access to AVE the Cervantes Institute's Virtual Spanish Class, an Internet-based educational platform.



Attendance and progress certificate indicating the level reached in terms of the Common European Framework of Reference for Languages (CEF). Minimum 80% attendance required.



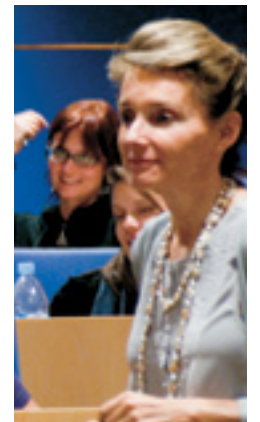
No additional registration fee.



Computers available in interactive learning areas and Internet access throughout the building.

To arrange an interview or request further information, call
+34 934 952 095 / 900 180 358*

** National calls only*



Our Teachers

ESADE-ELC teaching staff reflects our commitment to quality education, professionalism and rigorous standards. All our teachers are highly qualified and have extensive experience in teaching Spanish as a foreign language, whether general Spanish or Spanish for more specific purposes. Many teachers have been with us for many years and their tremendous professionalism is our best guarantee for success.

The ESADE-ELC building has been custom designed with language classes in mind and is equipped to make language learning fun, effective and rewarding.



“Our Language School is characterised by its intellectual rigour, high standards and an unwavering commitment to continual improvement. It treats students as individuals and carefully considers each person’s particular learning needs. Above all, the School realises that learning is all the more effective when it is made enjoyable. As I see it, these are the keys to ESADE-Executive Language Center’s success.”

Gracia Rodríguez Clemente
Spanish as a Foreign Language Teacher .

01 María Delia Castro Carrillo Teacher of Spanish as a Foreign Language at ESADE since 1995. Holds a degree in Spanish Studies and a Master in Teaching Spanish as a Foreign Language (UB). Methodology lecturer on the Master in Spanish as a Foreign Language Teacher Training Programme (UB). Currently completing doctoral studies in Philosophy and Educational Science (UB). Co-author of the *Diccionario de términos clave de ELE*, published by the Cervantes Institute's Virtual Centre. Director of the Spanish Department at ESADE-Executive Language Center since January 2005.

02 Merche Raya Cortés Teacher of Spanish as a Foreign Language at ESADE since 1997. Holds a Bachelor of Arts (UB). Has attended Management Skills courses on 'How to Speak in Public' and 'Techniques on How to Prepare Meetings'. Has also attended the seminars 'Setting up in Business' and 'A Vision of the Business World in Latin America'. Spanish as a Foreign Language teacher for ESADE MBA and MSc programmes.

04 Norma Castellón Gulià Teacher of Spanish as a Foreign Language at ESADE since 1997. Spanish Studies graduate (UB). Pedagogical Adaptation Course (CAP) (UB).

03 M^a Isabel Mercadé Navaro Teacher of Spanish as a Foreign Language at ESADE since 1988. Spanish Studies graduate (UB). PhD in Humanities (U. Pompeu Fabra).

05 Gracia Rodríguez Clemente Teacher of Spanish as a Foreign Language at ESADE since 1978. Teacher Trainer. Humanities graduate (UB). Master in Neurolinguistic Programming (School of Proudfoot, Scarborough, United Kingdom). Co-ordinator of the Teacher Training Seminars in Business Spanish for ESADE-ELC, in collaboration with other institutions.

06 Monica Colell Sancho Teacher of Spanish as a Foreign Language at ESADE since 1995. Holds a degree in Spanish Studies and a Master in Teaching Spanish as a Foreign Language (UB). Co-ordinator at the Laie Spanish School. Teacher of Spanish as a Foreign Language at De Montfort University (UK) and Universidad de Salamanca (Spain). Has attended several Teacher Training courses.

09 Gregorio Manero Mesones Teacher of Spanish as a Foreign Language at ESADE since 1982. Philology graduate (UB). Co-author and examiner for the CEMS European Business Programme international exams. Speaker on pedagogical and business subjects at teacher training seminars organised by various universities and the Cervantes Institute. RSA Diploma in 'Teaching of Community Languages'.

10 Asun Batlle Suñer Teacher of Spanish as a Foreign Language at ESADE since 1999. Law graduate (UB). Has attended various Management Skills courses on 'How to Manage People', 'Interpersonal Communication and Public Speaking', 'Negotiation', 'Techniques on How to Prepare Meetings'. Co-ordinator of Spanish Language courses for the MBA Programme. Speaker at teacher training seminars and creator of specific material for teaching Business Spanish.

11 Montse Bovet Pla Teacher of Spanish as a Foreign Language at ESADE since 1989. Law graduate (UB). Postgraduate qualification in Environmental Company Management (U. Pompeu Fabra). Teacher and author of material on cultural differences for on-line Spanish business courses. Teacher trainer since 1994. Co-author of the methods 'Hablando de negocios' and 'Entorno empresarial'. Co-author of 'Negociar a lo español'.

12 Alex Fernández de Castro Teacher of Spanish as a Foreign Language at ESADE since 1999, where he also teaches Spanish Culture and Recent Spanish History. Holds a degree in Law and a Master in Teaching Spanish as a Foreign Language (UB). Previously worked as presenter and scriptwriter on three televised Spanish courses in Tokyo, Japan, between 1992 and 1996, and as producer of documentaries filmed in Spain for the Japanese public radio and television corporation's (Nippon Hossō Kyokai) Spanish Programme. Published a biography of Spanish pop band, Nacha Pop, in 2002.

07 Ana Señor Montero Teacher of Spanish as a Foreign Language at ESADE since 1992. Holds a degree in Geography and History and a postgraduate qualification in History of Art (UB). Pedagogical Adaptation Course (CAP) (UB). Co-author and examiner for the CEMS European Business Programme international exams. Teacher of Spanish for On-line Specific Purposes at Universidad de la Rioja and previously teacher of Spanish for Specific Purposes at Universidad de Navarra. Lecturer and teacher trainer since 1996. Professor at Menéndez Pelayo International University since 1998 and official DELE examiner since 2004. Co-author of several books on Business Spanish and specialist in cultural differences.

08 Ana Cristina Riera Gil Teacher of Spanish as a Foreign Language at ESADE since 1997. Holds a degree in Spanish Studies and a Master in Teaching Spanish as a Foreign Language (UB).





Our Students

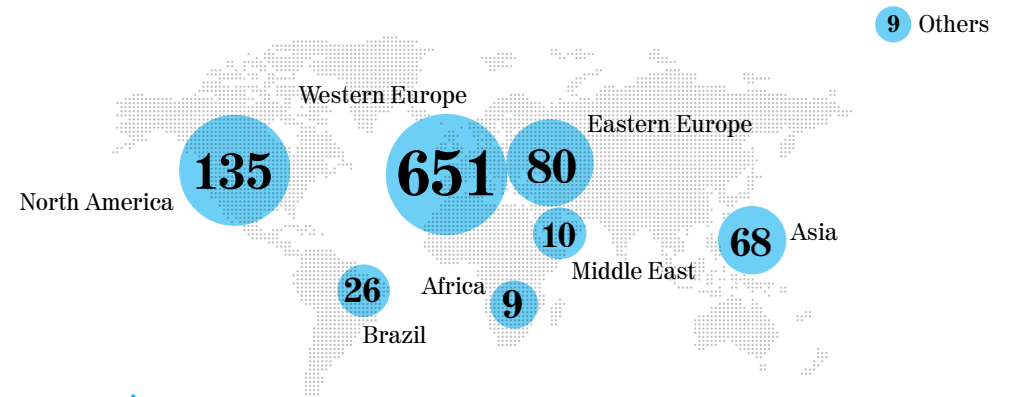
At ESADE-Executive Language Center we know that students are looking for the best solutions to meet their objectives. And that's why we offer them the best teaching professionals. In addition to specialising in teaching Spanish, our expert teachers are also knowledgeable in other areas such as history, art, intercultural relations, communication, law and philosophy. They have taken part in European research projects and in writing reference books for Spanish teachers, developing educational material and actively sharing their knowledge by participating in conferences, seminars and teacher training courses.



ESADE-Executive Language Center is a school geared to the needs of young professionals, executives and professionals who have no time to waste and who want results, especially in improving their oral communication skills in Spanish. There are no results without commitment and we know that all our students are committed to improving their Spanish. We give the very best of ourselves with the same objective in mind.



Nationalities 2006-2010



Average Age





Our Courses

Our courses are backed by objective and subjective results. On the one hand, they constantly score 4.5 out of 5 in terms of student satisfaction. Additionally, students' remarks at the end of the courses are a recommendation in themselves.

The variety of our courses reflects the variety of students who come to ESADE-ELC.

Among the different formats we offer are the following:

- courses lasting 1 and 2 weeks
- courses lasting 1 or several months
- daily classes
- classes 2 days a week
- customised courses adapted to your specific requirements.

We are confident you will find a course that measures up to your needs perfectly.



The Network of Associated Centers, created to promote the use of the Spanish language and guarantee effective, quality teaching of Spanish, is made up of centers which are expressly recognised as quality institutions by the Cervantes Institute.



ESADE-Executive Language Center is recognised as an official Examining Centre for the Diploma in Spanish as a Foreign Language (DELE).



The International Association of Language Centres is an award-winning association of independent language schools that teach the language of their country.



CEMS is a strategic alliance of leading business schools and multinational companies. Its mission is to set a global standard of excellence for pre-experience Masters in Management. ESADE has been the author of the Spanish exams since CEMS began.



Corresponding level

And to let you see what stage of the journey you're at...

CEF LEVEL*	INTENSIVE	SEMI-INTENSIVE	DELE EXAM	
C2	Upper		C2	
C1.2	Advanced 3	Advanced	C1	
C1.1	Advanced 2			
B2.2	Advanced 1	Intermediate Plus	B2	
B2.1	Intermediate 3			
THRESHOLD LEVEL				
B1.2	Intermediate 2	Intermediate	B1	
B1.1	Intermediate 1			
A2.2	Basic 3	Pre-intermediate	A2	
A2.1	Basic 2			
A1.2	Basic 1			A1
A1.1				

*CEF level after completing the course.

Six Options

to meet your needs

1

Need to learn Spanish in a fast and effective way?

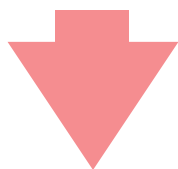


Intensives

- *Intensive Courses*

2

Want to consolidate an intensive course with one-to-one classes?



Combined

- *Intensive classes and individual tuition*

3

Want to improve your Spanish, but not miss out on other activities?



Semi-Intensives

- *Morning*
- *Afternoon*
- *Summer*

4

Looking for a tailor made Spanish course?

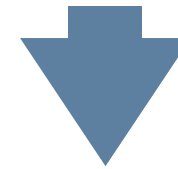


Customised

- *Individual*
- *In-Company*
- *Institutions*

5

Need to work on your professional communication skills?

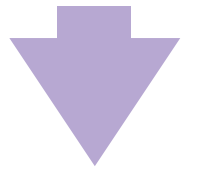


Business Spanish Modules

- *Intercultural Relations*
- *Negotiating in Spanish*
- *Meetings and Presentations*

6

Searching for an official qualification?



DELE Exam

- *Preparation Course and Exam*

Academic Programme

The following table will help you to make the best choice according to your own needs and objectives.

Course	Focussed on	Levels	Minimum entry level	Class hours (50 minutes)
Intensive	Development of the four skills, especially listening comprehension and speaking.	· All levels	Beginner (0)	20 per week* + visits/excursions Cultural Programme (minimum of 2 per month).
Combined	Specific student needs.	· All levels	Beginner (0)	28 per week* 22 with the group + 8 of individual classes.
Semi-intensive	Real group needs. Afternoon classes: Spanish for professional purposes.	· Pre-intermediate (Basic 2 and 3) · Intermediate (Intermediate 1 and 2) Intermediate Plus (Intermediate 3 and Advanced 1) · Advanced (Advanced 2 and 3)	Basic 1 (A1 CEF)	70 hours in total, 5 hours per week in two sessions of 2.5 hours each. Summer Semi-Intensive 30 hours in total, 6 hours per week in two sessions of 3 hours each.
Customised	Students' objectives and needs.	· All levels	Beginner (0)	Upon request
Business Spanish Modules	Skills and knowledge required in professional activity.	· Intermediate and Advanced	Intermediate 1	12 hours each module
DELE Preparation	Training in skills and abilities required to pass exams.	· Intermediate (Beginner and Upper levels if there is sufficient demand - minimum of 6 students)	Intermediate 3 (CEF B2 Level)	45 hours

- * In cases where the minimum number of students is not reached and to avoid cancelling the course, the total contact hours will be adjusted and extra tasks will be included.
- ** Except for some levels during September, October and/or November when the maximum is 12.
- *** The schedule will be confirmed on the first day of the course and will be adjusted according to any changes.
- **** Any adjustment made to morning courses will not affect individual tuition, which will be distributed accordingly. In weeks with holidays, the 8 hours of individual classes will be spread out over days with programmed classes.

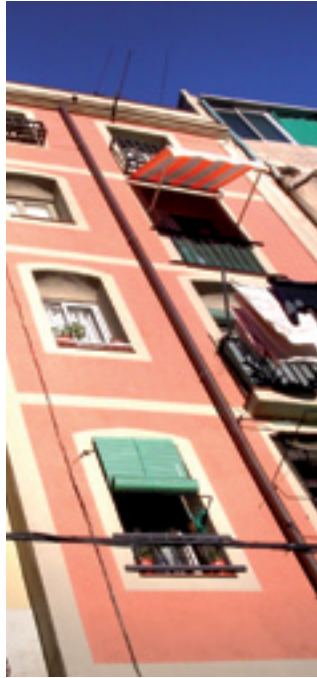
Start	Length	Student /class (average)	Students per group	Course material	Schedule
Every fortnight (See schedule)	2 weeks (minimum) 24 (maximum)	7	Minimum 6 Maximum 12	Included and prepared by course teachers.	Mon to Fri 9.30 am - 1.30 pm***
Every fortnight (See schedule)	1 week (minimum)			Included and prepared by course teachers.	Mon to Fri 9.30 am - 1.30 pm*** + individual classes Mon to Thu 2.30 pm - 4.30 pm****
October, March and July (See schedule)	4-5 months, 28 sessions, Summer Semi-Intensive 1 month 10 sessions,	8	Minimum 6 Maximum 12	Included and prepared by course teachers.	Mon-Wed/Tue-Thu (depending on the level) Morning 9.30 am - 12.00 pm Afternoon 6.30 pm - 9.00 pm Summer Semi-Intensive Tue-Thu 5.00 pm - 8.00 pm
All year round except during holidays or non-teaching days.	Upon request	1 or groups	Upon request	Included and prepared by course teachers.	Upon request
Feb/April/June In July (See schedule)	Three weeks One week each (See schedule)	7	Minimum 5 Maximum 10	Included and prepared by course teachers.	Friday 5.00 pm - 9.00 pm Mon to Thu 5.30 pm - 8.00 pm
Three or four weeks before the exam dates (See schedule)	Around 3 to 5 weeks	7	Minimum 6 Maximum 12	Preparatory manuals and material prepared by course teachers. Exam models from previous years.	April/May Tues & Thurs 6.30 pm - 9.00 pm Sept/Nov Mond & Wend 6.30 pm - 9.00 pm Candidates can participate in the Cultural Programme during the course.



Shared apartments

Three to four bedroom apartments. Each occupant has his/her own room and shares the living room, dining area, kitchen and bathroom with the other flatmates (a hire service for towels and bed linen is available).

The cost of shared apartment rental is in the range of €360 to €670 per month.



Furnished apartments

Fully equipped (include refrigerator, oven, washing machine, kitchen utensils (a hire service for towels and bed linen is available).

The cost of this option varies between €690 and €1800 per month.



Homestays

There are two options:

- Half board (between €700 and €950 per month).
- With cooking facilities (between €350 and €550 per month).

Homestay families are selected considering the preferences of our students.

Accommodation

For almost all of our students accommodation is extremely important. Although some make their own living arrangements in Barcelona, most students ask us to help them find a place to stay. We can offer a full range of options: apartments, shared apartments, homestays, halls of residence, hotels, most students choose shared apartments, which combine comfort and friendliness.

Student Halls of Residence

Students can contact the Halls of Residence directly online.

Residencia Universitaria Sarrià
Esports, 1-7 08017 Barcelona
Tel. +34 932 065 540
campus@residenciasarria.com
www.residenciasarria.com

MelonDistrict Poble Sec
Av. Paral·lel, 101
08004 Barcelona
Tel. +34 932 178 812
info@melondistrict.com
www.melondistrict.com

Torre Girona - RESA
Passeig dels Til·lers, 19
08034 Barcelona
Tel. +34 933 904 300
torregirona@resa.es
www.resa.es

We work with a housing agency to find students accommodation where they will be comfortable and happy.

Altiro 2000
Aitana Modolell
Mallorca, 304, Entlo. 1a
08037 Barcelona
+34 932 530 427
info@altiro2000.com
www.altiro2000.com



Monday to Thursday
from 10.00 am to 6.30 pm

Friday from 10.00 am to 3.00 pm

Saturday, Sunday and holidays closed.

You can get to Altiro from ESADE by taking bus No. 63 or 78 to Av. Diagonal and then changing and taking either bus No. 6, 33 or 34 to Calle Bruc.

Airport pickup service: €55. Altiro service fee: €160.

How to get here

and what you will find

ESADE is in the attractive residential area of Pedralbes. If you are coming by car, you can park free in the surrounding streets. If you are using public transport, you shouldn't have any problems finding ESADE as it is on quite a few bus routes. In addition, public transport in Barcelona is fast, easy to use and very safe. However, for your first couple of trips it may be best to take a taxi.



Car

The most convenient route to ESADE from the centre of Barcelona is along Av. Diagonal, the city's main avenue. When you reach Plaza Pius XII, turn right on to Av. Pedralbes. Follow Av. Pedralbes to the top of the hill where you will come to the Creu de Pedralbes crossroads. Turning left, you will find yourself at the intersection of Av. Esplugues (on the left) and Av. Pearson (on the right). Keep to the left and carry on along Av. Esplugues until you come to ESADE at No. 90-92 (it is a large pink-coloured building with columns).



Metro

The closest metro/train stop is Passeig Reina Elisenda, on the U6 Line. You can then either walk the rest of the way (15 min.) or take the No. 22, 68 or 75 bus. From the Maria Cristina station (on the Green Line), you can walk to ESADE (approx. 20 min.) or take the No. 63 or 78 bus.



Bus

Buses 22, 63, 68, 75 and 78 have stops in front of ESADE.



On foot or by bicycle

Many students who live in the neighbourhoods close to ESADE choose to walk or cycle to class. It's about a 20-30 minute walk from the Tres Torres/Sarrià neighbourhood.



From the Airport

The easiest and most direct way to get to ESADE is by taxi. Journey time is 15-20 minutes and costs around €25. Tell the taxi driver to take the Ronda de Dalt Exit (Exit 10).



ESADE-Executive Language Center is in ESADE Building 3, Av. Esplugues 92-96.

This building houses:

- Executive Language Center Programmes
- MBA Programmes
- Executive Education Programmes
- Services: bank, travel agency, cafeteria and restaurant
- Resources: learning centre and library, computer room, Executive Language Center Registrar's Office

For more info

If you need any help with your registration, payment or more information about our courses, don't hesitate to contact me. You can find me on the ground floor of Building 3, to the right of the Reception Desk.



ESADE
Executive
Language Center

Vicky Fernández

victoria.fernandez@esade.edu

T +34 934 952 095



